

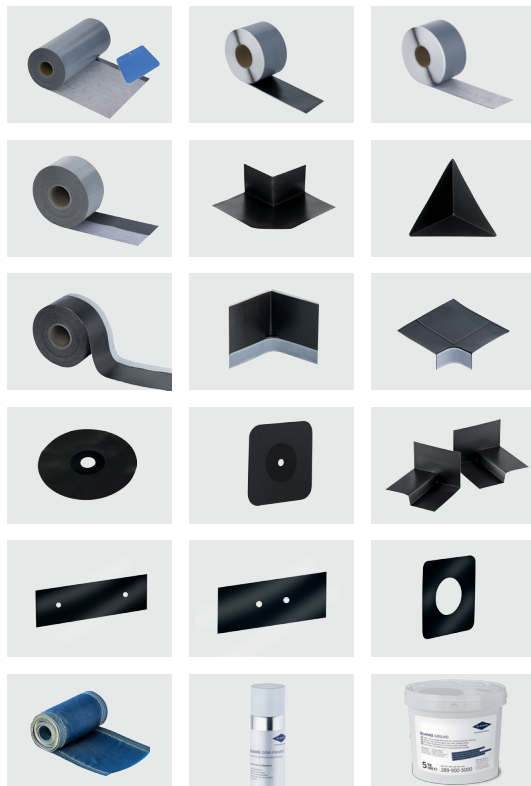


FÜR HANDWERK, DAS ÜBERZEUGT.

## INSTALLATION INSTRUCTIONS

### BLANKE DISK

Self-adhesive waterproofing system to produce a seal in combination under ceramic or natural stone floorings and wall coverings



#### Material properties

BLANKE DISK is an officially approved, self-adhesive, watertight, highly elastic, and crack-bridging waterproofing system for interior applications, consisting of polyolefin foam with pre-applied adhesive and a plastic cover. The front face is coated with a special fleece fabric for ideal adhesion of the thin bed mortar. To match the BLANKE DISK waterproofing membrane, the product range includes inner and outer corners, sealing tapes for wall and floor joints, sealing collars for pipe openings, as well as a bathtub waterproofing membrane with the corresponding moulded parts. The BLANKE DISK Tool pressure aid for optimal adhesion to the substrate is included with the BLANKE DISK waterproofing membrane. After using the BLANKE DISK to establish the composite sealing, the tiles or natural stone coverings can be laid immediately in thin bed mortar.

#### Substrates

Wall and floor surfaces waterproofed with BLANKE DISK must always be dry, capable of bearing the load and free of loose matter. Grind back any layers that could impair bonding. The substrate flatness must comply with DIN 18202. All substrates must be primed with Blanke GROUND. Depending on the substrate and properties, dilute Blanke GROUND to the prescribed level. Old tile surfaces must be firmly in place, thoroughly cleaned and dry. No priming is required for such substrates. Technically, primers by other providers of construction chemicals can also be used. This is subject to prior consultation with the Blanke Application Technology team. Apply levelling layers before fitting the BLANKE DISK waterproofing system.

- > Concrete, dry
- > Cement screed, at least 28 days old and dry
- > Calcium sulphate screeds with residual moisture content <0.5 %
- > Heating screeds, after residual moisture content reached
- > Dry screeds
- > Old, cleaned, firm ceramic floor covering
- > Mixed substrates, no height differences
- > Cement render
- > Lime-cement plaster
- > Gypsum plaster
- > Gypsum plasterboards

With building  
authority cer-  
tificate





FÜR HANDWERK, DAS ÜBERZEUGT.

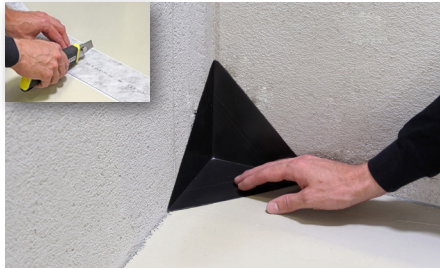
# INSTALLATION INSTRUCTIONS

## BLANKE DISK

Self-adhesive waterproofing system to produce a seal in combination under ceramic or natural stone floorings and wall coverings



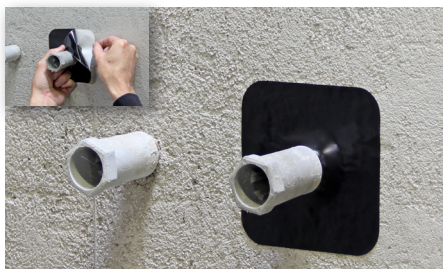
**1** All substrates must be dry, capable of bearing the load and free of any layers that could impair bonding. The flatness specification must meet DIN 18202 requirements. Apply primer coating BLANKE GROUND to wall and floor surfaces according to their surface condition. Observe the specified drying time.



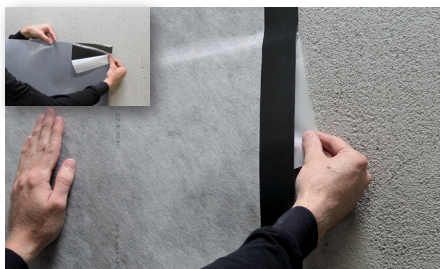
**2** Waterproofing the corners is the first step. Fit BLANKE DISK CORN 1/A corner pieces by removing the plastic covers on the reverse and affixing the pieces to the substrate. Using the BLANKE DISK TOOL allows the moulded parts to be placed precisely into the corner areas. In inner corners, the large adhesive surface sticks to the floor. Use a cutter knife to cut BLANKE DISK to size.



**3** Fit BLANKE DISK TAPE to all horizontal and vertical corner areas. Pull off roughly 5 cm of the plastic cover on the reverse, apply the corner waterproofing membrane to the substrate and press it against the surface to eliminate bubbles while removing the plastic cover on the reverse. Overlap the products by 5 cm.



**4** Pipe openings must also be sealed with BLANKE DISK WM/BM wall and floor collars before applying the waterproofing membrane. Ensure that the sealing collar forms a proper collar at the pipe extension required.



**5** Surface sealing is carried out using BLANKE DISK waterproofing membrane. Pull off roughly 5 cm of the plastic cover on the reverse of the narrow part, apply the strip to the substrate and gradually press it against the surface to eliminate bubbles when removing the plastic cover on the reverse.



**6** Affix additional waterproofing membranes to the fleece-free areas of the BLANKE DISK waterproofing membrane, and press them firmly into place by hand ensuring that bubbles are removed. Use a cutter knife to cut BLANKE DISK to size.



**7** In order to use leftover pieces of BLANKE DISK waterproofing membrane on the surface, apply BLANKE DISK TAPE at a 90° angle to the existing waterproofing membrane on the fleece-free area. Then align the joint area of the two waterproofing membranes with an overlap of at least 5 cm on the BLANKE DISK TAPE.



**8** As a last component, apply the BLANKE DISK AB edge tape to the remaining fleece-free overlap areas of the waterproofing membrane. Here too, uncover 5 cm of the plastic cover, apply the edge tape and press it against the wall by hand to eliminate bubbles while removing the plastic cover on the rear.



**9** After producing the composite sealing, press the BLANKE DISK into place using the supplied BLANKE DISK TOOL, to ensure optimal adhesion of all components to the substrate. Afterwards, you can lay the tiles or natural stones in thin bed mortar immediately.

**Attention:** During installation please refer to the notes in our latest technical data sheets. All work must also be carried out in compliance with current industrial standards.

Blanke GmbH & Co. KG

Stenglingser Weg 68-76  
58642 Iserlohn/Germany

T +49 2374 507-0  
F +49 2374 507-4230

E info@blanke-systems.de  
I www.blanke-systems.de

Author: JP 30.08.2018  
Page 2 of 2