



FÜR HANDWERK, DAS ÜBERZEUGT.

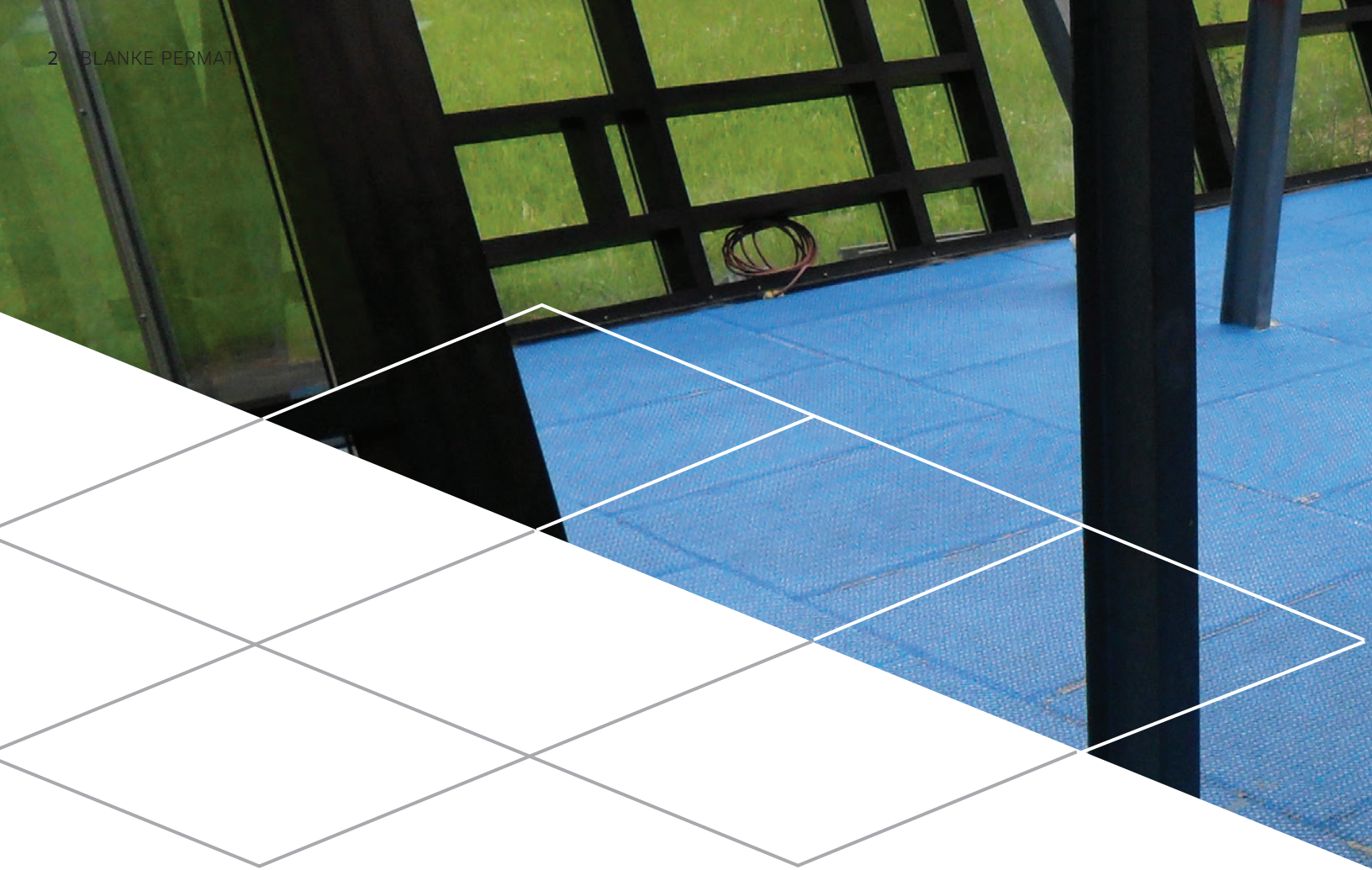
# BLANKE PERMAT

Multifunctional Reinforcing Underlayment



[blanke-systems.com](http://blanke-systems.com)





## THE ULTIMATE TILE PROTECTION

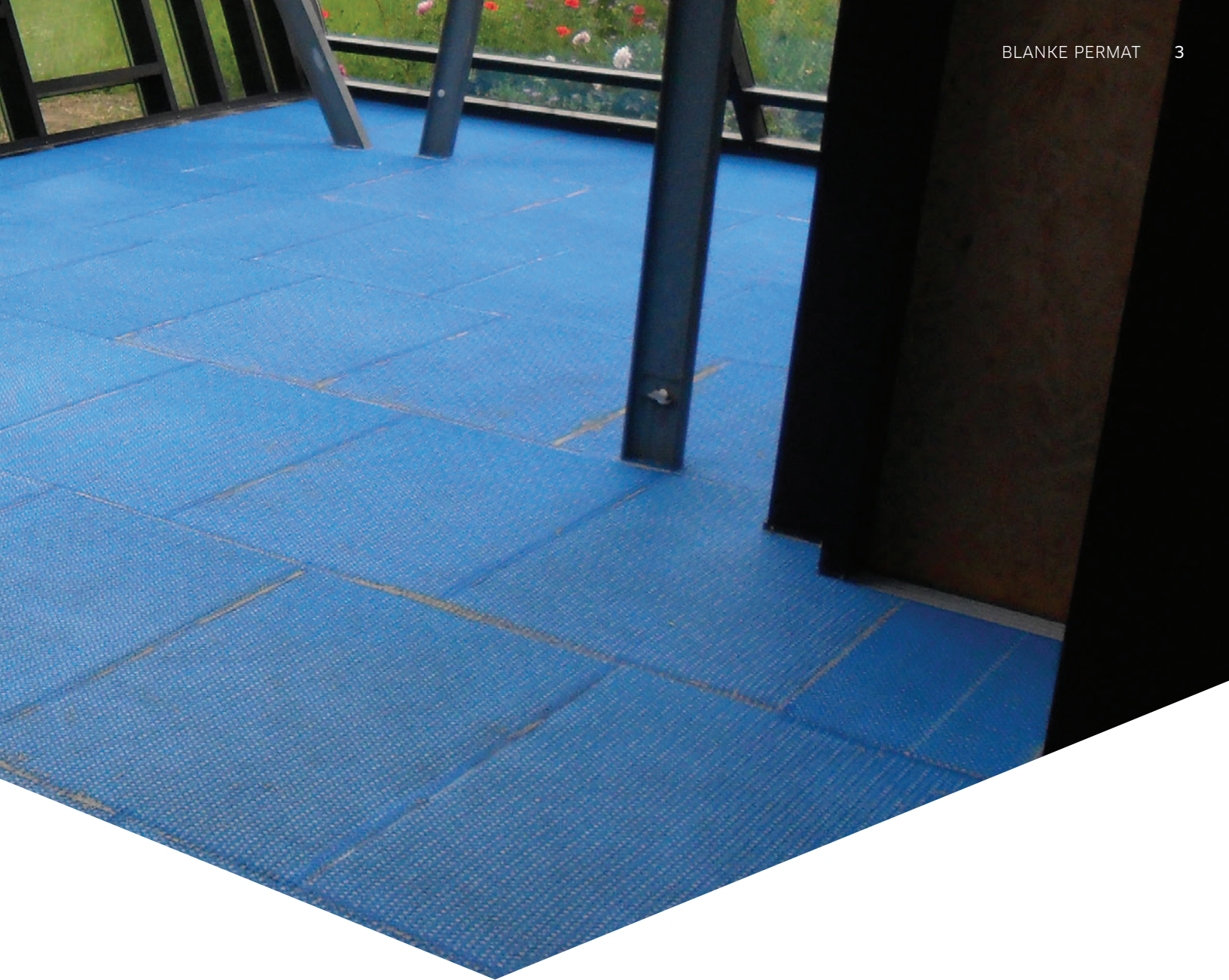
for over 14 years

### WHAT'S UNDER YOUR TILE MATTERS

For more than 14 years, the innovative multi-functional reinforcement and anti-fracture under-layment called BLANKE PERMAT has been protecting ceramic and stone tile installations of every kind. What makes it different from other underlayments? BLANKE PERMAT outperforms uncoupling membranes in every way. It also provides a strong base for all types of tiles and substrates – even the more demanding mixed substrates – with the added benefit of providing a low profile. Substrate issues are eliminated by BLANKE PERMAT's permanence, strength, and crack isolation properties by creating a rock-solid subfloor to support and protect your tile.

German-engineered with the highest quality materials, BLANKE PERMAT is only 3,3 mm thick and consists of three layers: an extruded glass fiber mesh, an alkali-resistant HDPE mesh, and a polypropylene fleece base. The two layers of mesh perform like a reinforcing concrete rebar beneath your tile while the fleece layer anchors the mat to the substrate. The result? Optimal traffic and point load support, unique adhesive tensile strength, and incredible interlocking power for your thinset mortar.

Thanks to BLANKE PERMAT, traditional tiled floors can be transformed into modern multifunctional installations that are guaranteed lasting beauty and functionality for years to come.



04 POINT LOAD STRENGTH



06 TENSILE STRENGTH



08 TRAFFIC LOAD STRENGTH



10 MATERIAL INFORMATION

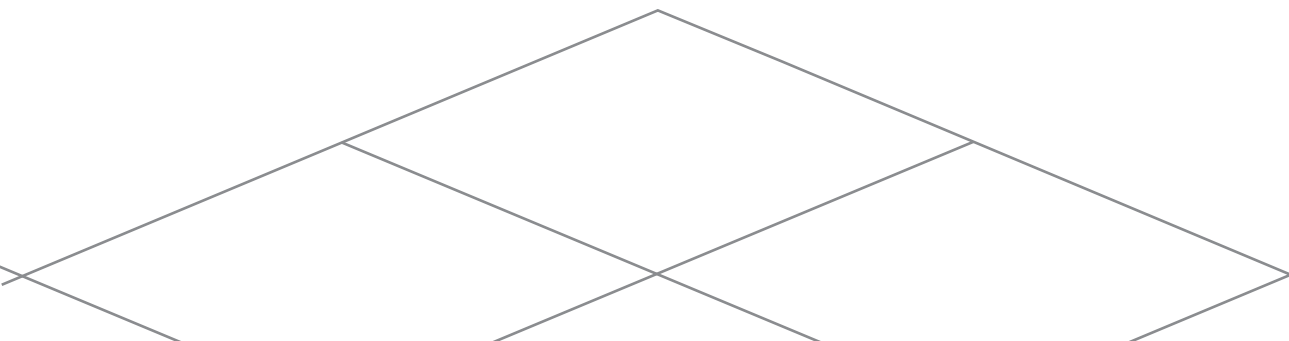


POINT LOAD STRENGTH

# REINFORCE FLOORING



PREVENT BROKEN TILES WITH  
OPTIMAL POINT LOAD PROTECTION



## DOUBLE YOUR POINT LOAD CAPACITY

Tile can easily break when a large amount of weight is applied to one point. When BLANKE PERMAT is installed beneath tile, however, even high point loads cannot damage the tile due to its optimal strength and protection.

To prevent tile from breaking, the substrate beneath must have zero flexibility and the load must be minimized. Many uncoupling membranes

have hollow cavities that can cause breakage under high point loads, but BLANKE PERMAT is different. Thanks to its uniform height and consistent grid structure, heavy weight placed on tile is distributed and supported. BLANKE PERMAT combined with modified thinset mortar serves as a load-distributing layer that can withstand more than twice as much weight as competing uncoupling membranes.



PICTURED  
BAPS Shri Swaminarayan  
Mandir, Atlanta, U.S.  
PRODUCT  
BLANKE PERMAT

TENSILE STRENGTH

**OUTPERFORMS  
UNCOUPLING**



UNIQUE STRENGTH THAT EXCEEDS  
TILE ADHESION STANDARDS



## INCREDIBLE TENSILE STRENGTH

BLANKE PERMAT'S patented design holds both tile and thinset mortar firmly to your substrate. The bond is so strong that tile jobs that properly utilize BLANKE PERMAT have seven times greater tensile strength than competing uncoupling membranes. Substrates are pliable, and they contract and expand at a much greater capacity than tiles. Normal changes in temperature can also cause shearing, which creates movement between the substrate and tile and can greatly damage your installation. This makes the presence of a

reinforcing underlayment imperative, especially for large format tiles with tight grout joints. One of BLANKE PERMAT'S defining qualities that sets it apart from other underlayments is its unique tensile strength that reinforces tile and eliminates shearing. In product testing, movement between the fiber mesh layers and fleece anchor are so minimal that BLANKE PERMAT'S adhesive tensile strength is almost equal to the required strength of tile adhesive. BLANKE PERMAT continues to outperform uncoupling membranes on all fronts.



PICTURED  
Peace Church  
Iserlohn, Germany, 2013  
PRODUCT  
BLANKE PERMAT

TRAFFIC LOAD STRENGTH

# REDUCES DEFLECTION ON WOOD SUBSTRATES



TRAFFIC LOAD SUPPORT  
FOR EVERY ENVIRONMENT



## THE BEST CHOICE FOR ANY INTERIOR TILE JOB

BLANKE PERMAT can withstand the highest traffic loads, earning a HEAVY INDUSTRIAL rating in Robinson Floor Testing. Its ratings far exceed uncoupling membranes, and this strength allows tile laying in almost any environment. BLANKE PERMAT is even proven for use in older buildings where floor coverings would otherwise need to be replaced during renovations. Due to its ability to

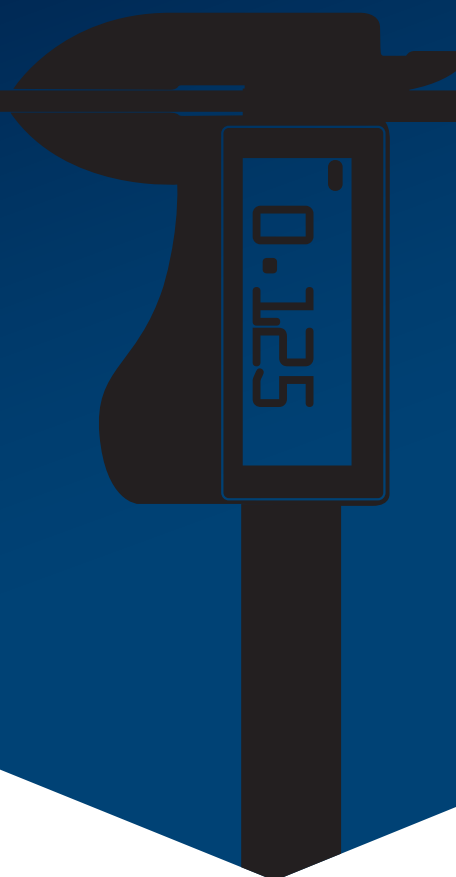
absorb such high traffic loads, BLANKE PERMAT can be used without restriction in any interior tile applications. This makes BLANKE PERMAT the perfect underlayment for both residential installations (like kitchens, bathrooms, and living rooms) and commercial jobs (like hotels, car dealerships, showrooms, and airports). The possibilities are endless.



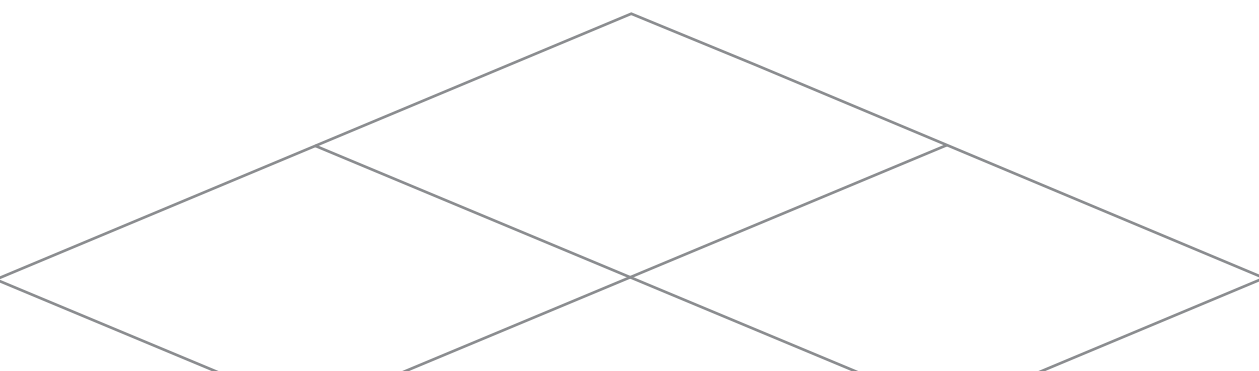
PICTURED  
Audi Dealership  
Fulda, Germany, 2013  
PRODUCT  
BLANKE PERMAT

MATERIAL HEIGHT

**1/8** in



LOW CONSTRUCTION HEIGHT  
FOR IDEAL RENOVATIONS





## NO OTHER UNDERLAYMENT COMES CLOSE

No other underlayment on the market can compete with BLANKE PERMAT's functionality and load distribution - especially at a thickness of only 1/8 inch. Because of BLANKE PERMAT's thin nature, it is easy to transition from tile or stone to different flooring materials. This makes it the perfect choice for renovations, especially in older buildings.

In stone installations, BLANKE PERMAT even eliminates the need for a second layer of plywood, something uncoupling membranes require which adds unneeded height. The evenly-distributed reinforcement, strength, and crack-isolation work simultaneously with 1/8" thickness to set BLANKE PERMAT apart from the competition.



PICTURED  
Residence  
Iserlohn, GERMANY  
2014  
PRODUCT  
BLANKE PERMAT

DIFFUSION CAPABILITY

100 %

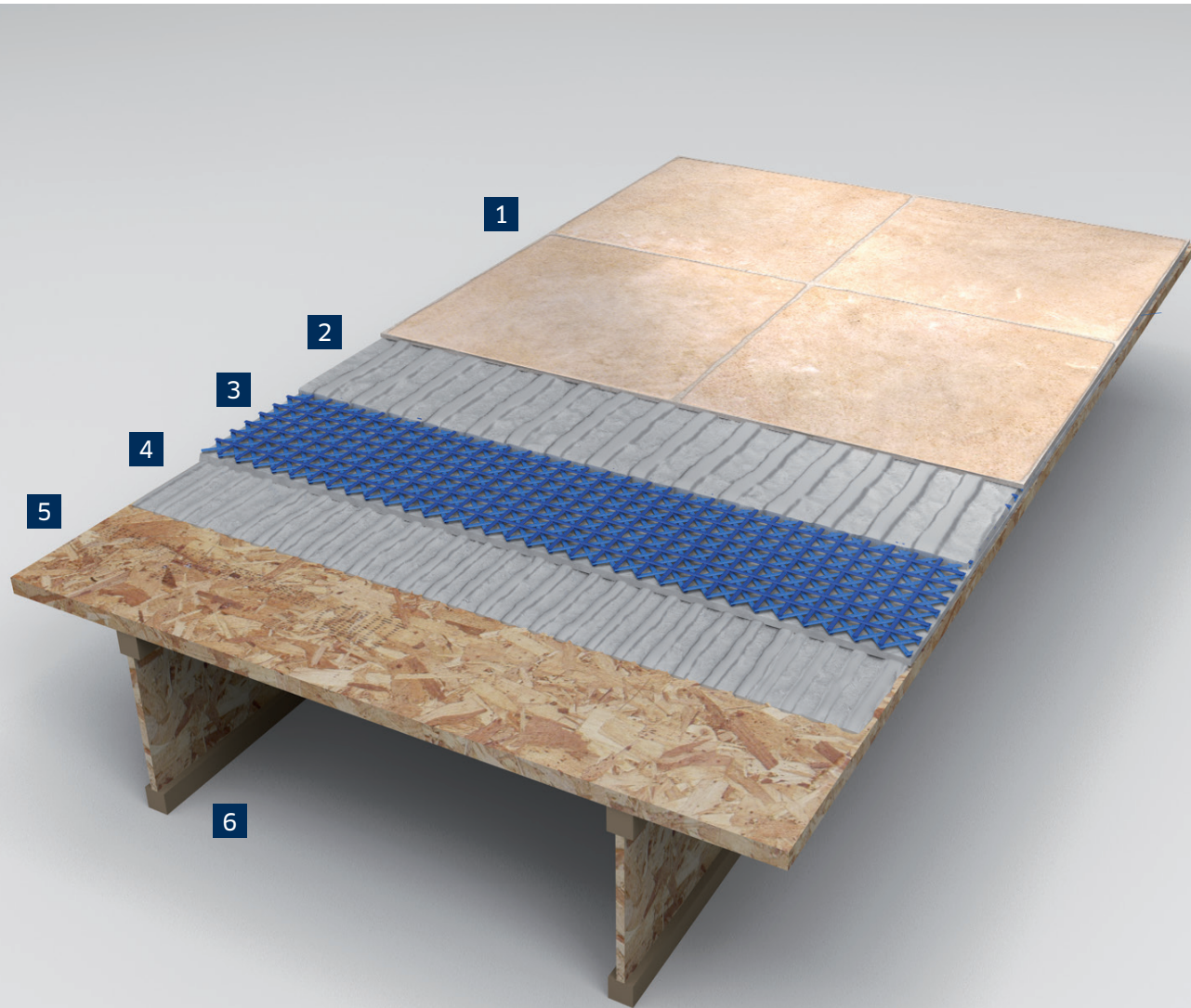
SECURE DRYING OF THE  
TILE ADHESIVE, GUARANTEED



## FAST INSTALLATION AND UNMATCHED DURABILITY

BLANKE PERMAT's patented construction and fleece underlayer allow for proper curing of thinset mortar. The moisture from the thinset mortar escapes through the fiber layers instead of getting trapped during curing time. Thanks to this and the flexibility of the fleece anchor, tile can be set immediately on BLANKE PERMAT. This is yet another

way that BLANKE PERMAT outperforms competing uncoupling membranes. Even on fresh cement screeds, tile can be installed and immediately walked on. In conclusion, BLANKE PERMAT ensures fast installation time and significantly extends the durability of tile and stone flooring.



1. TILE
2. THINSET MORTAR
3. **BLANKE PERMAT**
4. THINSET MORTAR
5. PLYWOOD/OSB
6. FLOOR JOISTS



## PROVEN PERFORMANCE for over 14 years

### IDEAL FOR RETAILERS

All Blanke floor systems are designed as installer-friendly, lightweight products. BLANKE PERMAT is a cost-effective underlayment that is easier to transport and install than traditional uncoupling membranes. Blanke ensures excellent quality and provides permanent installation systems that also can accommodate in-floor heating. Complaints are a thing of the past.

### HIGH QUALITY FOR BUILDERS

Blanke offers tailor-made, safe, and economical solutions for commercial and residential jobs to keep tiles permanently beautiful and crack free. Certified

and versatile products are available for every tile and stone installation. Blanke began its long history of quality in 1948 and has been proven to protect tiled surfaces ever since.

### FUNCTIONAL FOR ARCHITECTS

Blanke regards itself as a partner for architects in all matters of renovation and new construction, offering education, high-quality products, and services tailored to their specific needs. Architects drafting new plans can rest assured that by choosing Blanke products like BLANKE PERMAT, they are giving their construction plans the best quality enhancement and protection.







Consulting and Sales

**Blanke Systems GmbH & Co. KG**

Stenglingser Weg 68-70

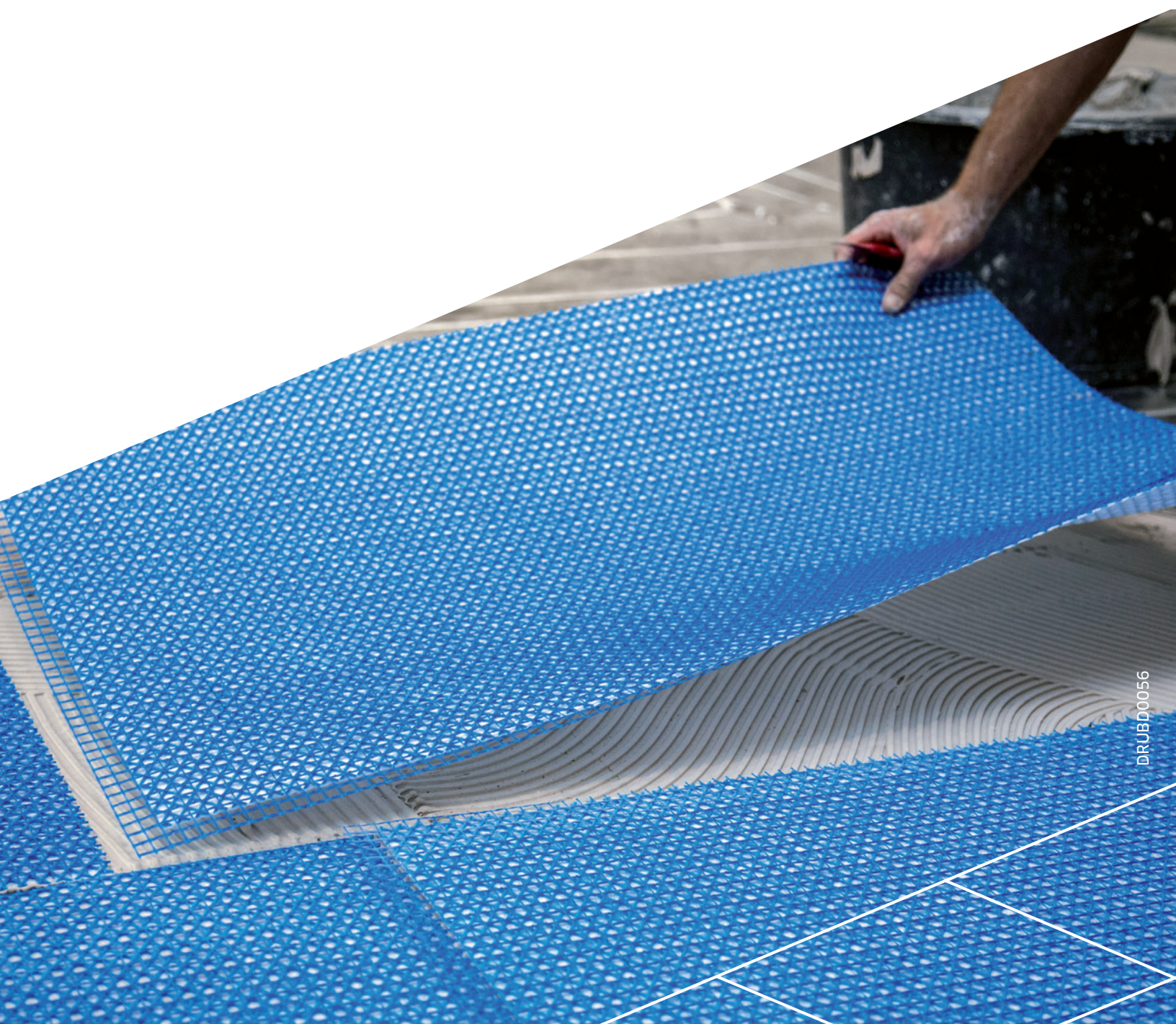
58642 Iserlohn / Germany

T +49 (0) 2374 507-0

F +49 (0) 2374 507-4230

E [info@blanke-systems.de](mailto:info@blanke-systems.de)

I [www.blanke-systems.com](http://www.blanke-systems.com)



DRUBD0056